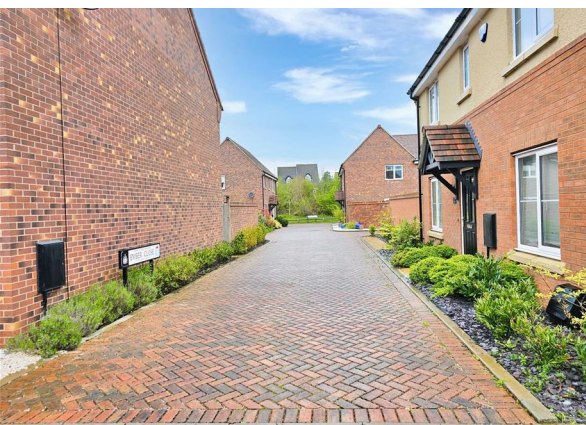
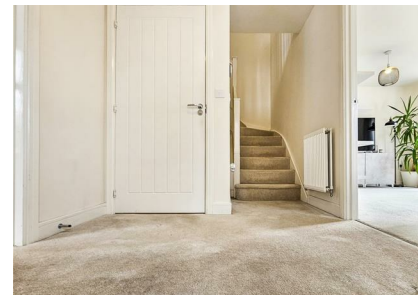


Ember Close, Woodville, DE11 8GR

£245,000

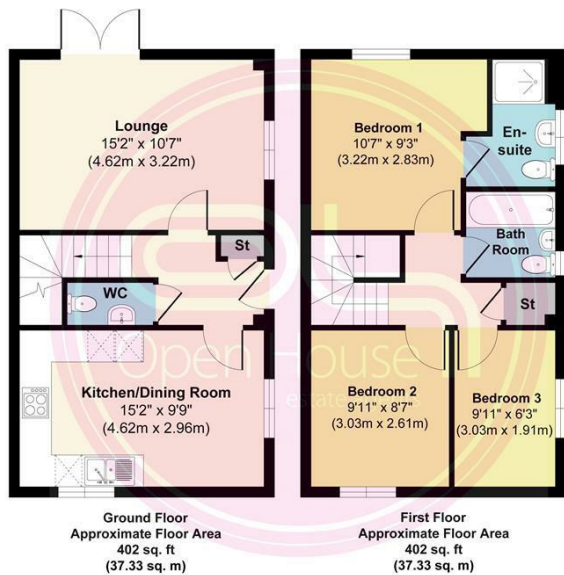
Council Tax Band: B



Perfect for couples or small families, The fantastic Milldale by Taylor Wimpy is built with convenience and luxury in mind. The kitchen/dining area is an ideal space for entertaining and the living room is enhanced by French doors leading to a south facing garden. The cloakroom WC is a convenient touch for modern family living.



Open House Burton & Swadlincote



Approx. Gross Internal Floor Area 804 sq. ft / 74.66 sq. m
Illustration for identification purposes only, measurements are approximate and not to scale, unauthorized reproduction is prohibited.
Produced by designimperial.com



Energy Efficiency Rating		
	Current	Potential
Very energy efficient - lower running costs		
(92 plus) A		96
(81-91) B	84	
(69-80) C		
(55-68) D		
(39-54) E		
(21-38) F		
(1-20) G		
Not energy efficient - higher running costs		
England & Wales	EU Directive 2002/91/EC	